

# SFC&G

San Francisco Cottages and Gardens

COTTAGESGARDENS.COM | SEPTEMBER 2016

## Fall *Style*

ROSS  
SOMA  
MARINA  
PAC  
HEIGHTS

SUBLIME  
JAPANESE  
DESIGN





# TIME + AGAIN

**New Traditional**  
Architect Shay Zak's minimalist take on traditional shingle style features steep roofs and cedar shingles. See *Resources*.

# Kelly Hohla and Shay Zak design a modern classic for a favorite client

BY LINDA O'KEEFFE | PHOTOGRAPHY BY JOHN MERKL



**I**N A HOME ON A TREE-LINED, SYLVAN LANE IN Ross, familiarity breeds contentment. “I’ve created four interiors for this family,” says designer Kelly Hohla, “and the trust and friendship we’ve built gives me the freedom to work intuitively.” That translates to her fulfilling the owners’ request for “elegance, practicality and comfort.” Architect Shay Zak has a similar rapport with the clients; having collaborated on two projects with them, here he created a new, minimalist take on traditional shingle style.

On the exterior, cedar shingles envelop the facades and steeply pitched roofs of the main and guest houses, while cedar planks line dormers and porch ceilings and steel casement windows add a cool touch. Throughout the 4,800-square-foot interior, Zak’s detailing is meticulous: Oak cabinetry, quarter-sawn oak floors, pocket doors, flush trims on the baseboards and curtain tracks recessed into ceilings form an understated backdrop. “The more I practice, the more committed I am to minimalistic detailing,” notes Zak.

Hohla, who was assisted by designer Celeste Barnes-Bremer, is known for

her spirited use of color, but here painted most of the ground floor’s walls with Farrow & Ball Wimborne White. The spare backdrop complements the textures of her thoughtful object choices and her pairings of tactile velvets, bouclés, cashmeres and linens with bronze, antiqued brass and black iron. “I never think about matching,” Hohla explains. “I aim to coordinate and highlight all the nuances.”

There’s a sophisticated calm to the predominantly neutral ground floor, where a sitting room and dine-in kitchen open onto a backyard and pool. Hohla’s choices here are sculptural: she placed curvy, retro armchairs alongside low-slung sofas. “Comfort was paramount, so I evaluated the perfect foot resting height for each custom ottoman and the optimum lounging depth for each sofa,” says Hohla. In the dining room, she chose a cloudlike Ted Abramczyk pendant and customized an industrial-style Ted Boerner metal buffet to achieve a stylish setting for entertaining. A five-and-a-half-foot square Liza Lou woven assemblage of glass beads in the dining room came from the John Berggruen Gallery, as did most of the art in the house.





### Tailored Comfort

(CLOCKWISE ACROSS SPREAD FROM TOP LEFT) In the library, the bronze Jonathan Browning chandelier and Joseph Jeup sofas are from De Sousa Hughes. Painting is by Ian Kimmerly. Jens Risom lounge chairs and ottoman for Ralph Pucci sport a Pierre Frey fabric. A Jay Jeffers oval stool complements a wool Stark rug. **Smart Cocktails** (LEFT) The drinks setting features a Champagne bucket from Anthem and decanters from Gump's. See Resources.





Sharp  
Tai Ping  
Hay ba  
sculptu





**Sharp Seating** (OPPOSITE PAGE) A Ted Abramczyk Cumulus pendant hovers above a Holly Hunt table. Ironies dining chair is upholstered in Jerry Pair leather. Rug is from Tai Ping America. Christopher Farr drapes are from De Sousa Hughes. **Clean Palate** (ABOVE) Nessen Lighting pendants are suspended above the kitchen island, where Hay bar stools deliver graphic impact. **Gray Scale** (BELOW) In the family room, a Holly Hunt sectional is from Kneedler | Fauchère. The Troscan coffee table features a sculptural steel base and a limestone top. Tuell and Reynolds side tables are made of cast bronze. Drapes are crafted from a Holland & Sherry wool. See Resources.





“I NEVER THINK ABOUT MATCHING.  
I AIM TO COORDINATE AND HIGHLIGHT  
ALL THE NUANCES”



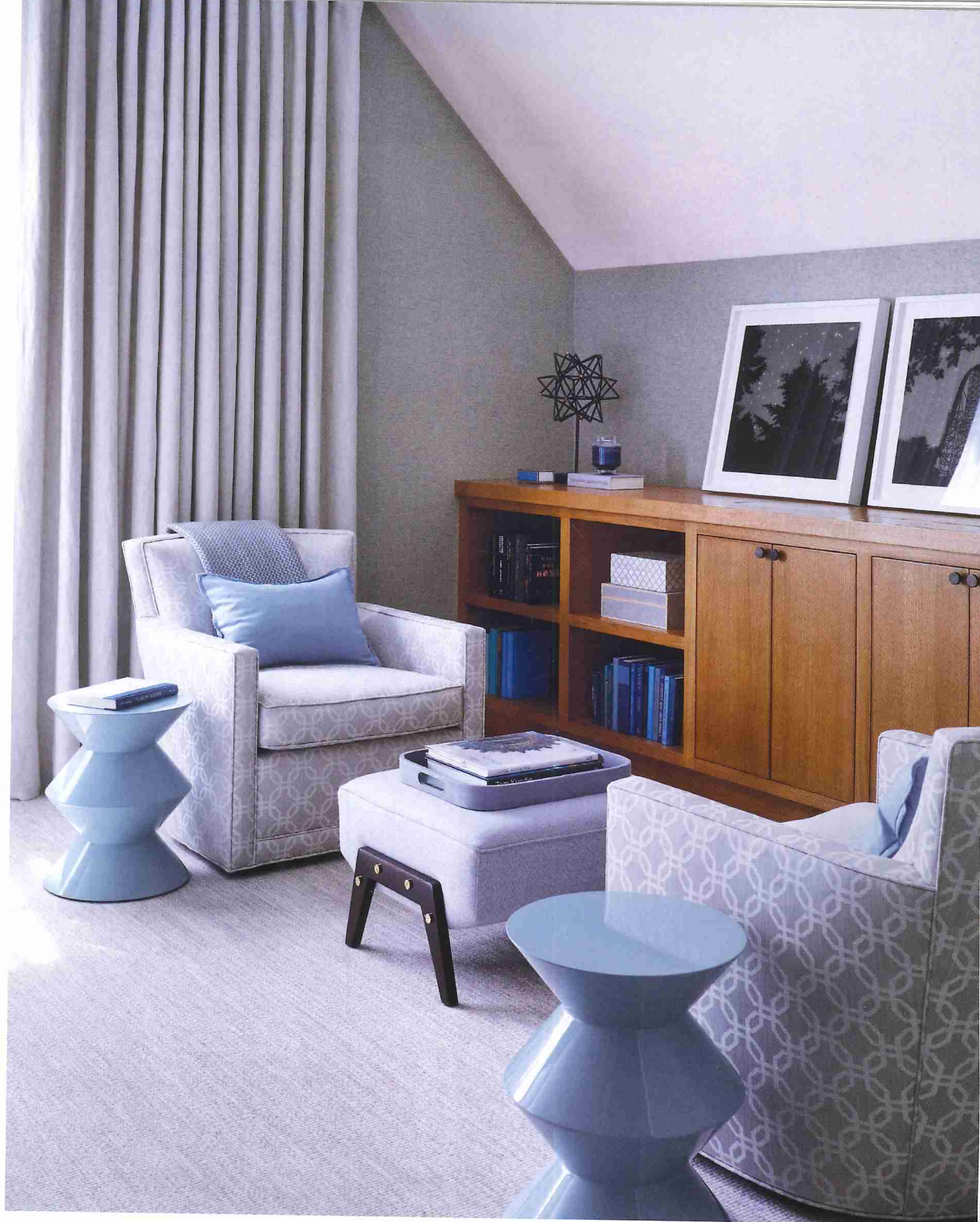


**Groovy Guestroom**

(OPPOSITE PAGE) An Arteriors lamp tops a Mattalano Ettore nightstand in the guest bedroom. Matouk sheets are from Sue Fisher King. **Cool Corner** (THIS PHOTO) Vintage lounge chairs from Coup d'Etat are upholstered in a Romo fabric. Classicon Bell side table in blue glass and brass is from Arkitektura. See *Resources*.

**Sartorial Sleep** (THIS PAGE) In the master bedroom, Fuse Avanti table lamps are from Hewn. Custom bed designed by Diane Alexander was fabricated by Fitzgerald Upholstery. A Jiun Ho Arica bench with leather upholstery from Innovations is from Sloan Miyasato. See *Resources*.





**Tête-à-Tête** (ABOVE)  
A pair of A. Rudin lounge chairs and a Studio Van den Akker ottoman create a cozy spot for two. Sky blue side tables are by Minotti. See *Resources*.

Upstairs in the master bedroom, the ceiling is shaped by a dormer, but a built-in headboard (done previously by New York interior designer Diane Alexander) cleverly resolves the space. A palette of blues and soft neutrals is established through walls wrapped in a soft Phillip Jeffries grasscloth. An inviting seating area is created with A. Rudin lounge chairs and a Studio Van den Akker Charles ottoman. The space is further punctuated with light blue through a pair of shapely Minotti side tables.

When Hohla came across a set of green rocking chairs, she knew they would be perfect for the backyard because landscape architect Jennifer Bloch treated the space as if it were an exterior room. On the perimeter, a continuous boxwood hedge, rows of espaliered Meyer lemon, pear and apple trees and upward of 45 English laurel trees provide a dense privacy wall. A central pool reflects an on-axis view of the house and offers swimmers a direct glimpse of Mount Baldy. The result of Hohla, Zak and Bloch's collaboration? A modern classic that boasts sophisticated style inside and out. ✨